



# **NFHS Soccer**

---

# **Dual System Mechanics**

# Objectives

- Identify responsibilities of dual system officials
- Perform basic mechanics in prescribed manner
- Describe general patterns of movement
- Describe major set positions used
- Identify responsibilities of Lead/Trail officials

# Head Referee

- Conducts pre-game conference(s) and instructions
- Make decisions on points not covered by Rules
  - ◆ Match authority on rules interpretation, equipment legality
- Who's the Head Referee?
  - ◆ Planned dual will be designated
  - ◆ Unplanned dual? Higher ranking

# Referee Team Pre-game

- Inspect field/players together
- Determine lead/trail directions (left or rt.)
- Decide touchline/goal line responsibilities
- Review proper mechanics/techniques
- Emphasize eye contact; consult if needed
- Simultaneous whistle – defer to head ref
- Coordination Issues
  - ◆ Substitutions
  - ◆ Injuries
  - ◆ Restarts

# Pre-game with Coaches

- Introduce yourself, no long conversations
- Ask coaches “Are your players properly equipped and ready for play”
- **Ask for the roster**
- **Modified Goalie MUST have a mouthpiec**

## Making the Call I

### Responsibility for Restart Whistle



#### **Trail whistles start**

Kickoff(s)  
Drop Ball ?  
Goal Kick  
Throw In (Trail side)

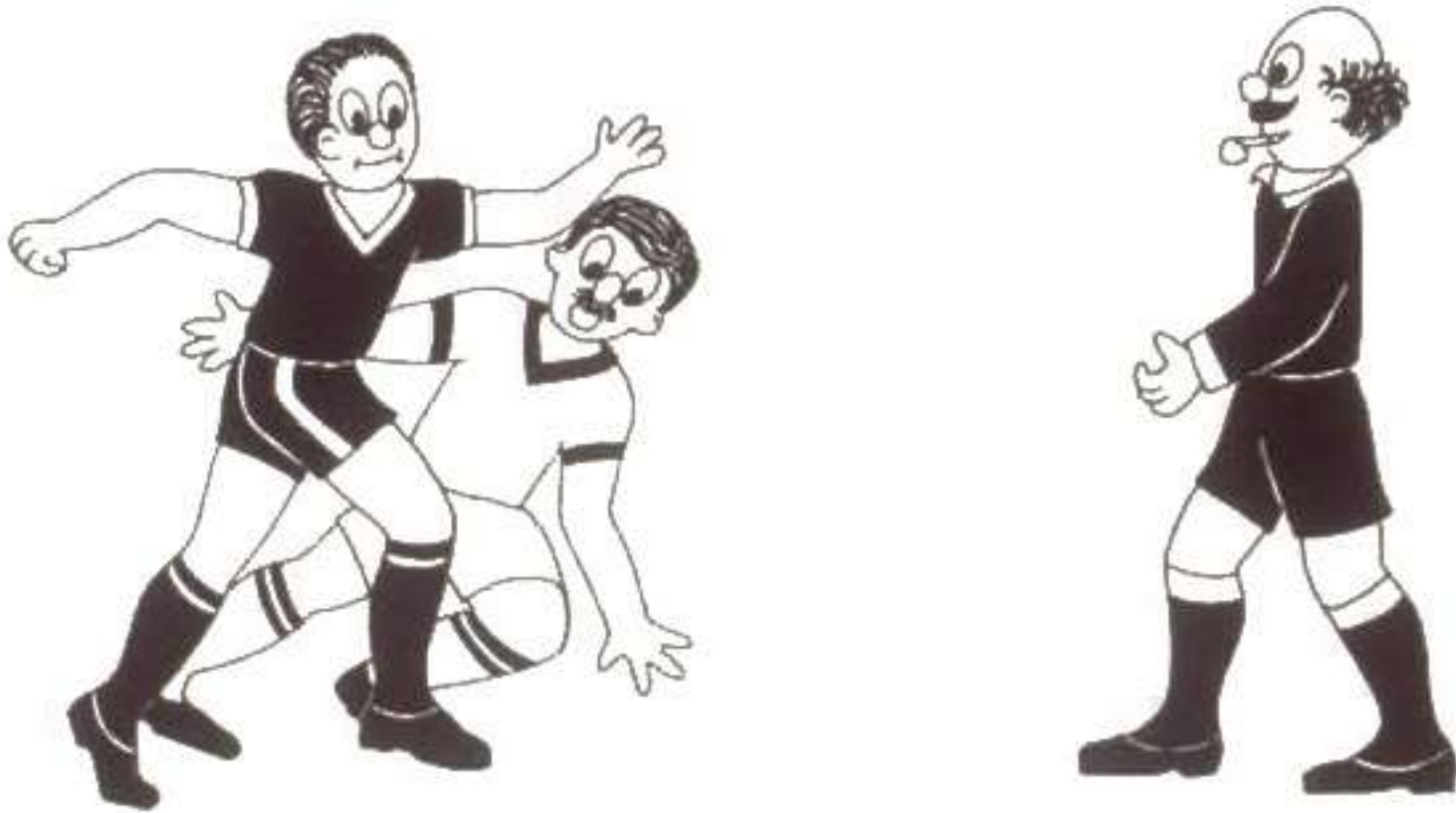


#### **Lead whistles start**

Corner kick  
Penalty kick  
Free kick  
Throw In (Lead side)

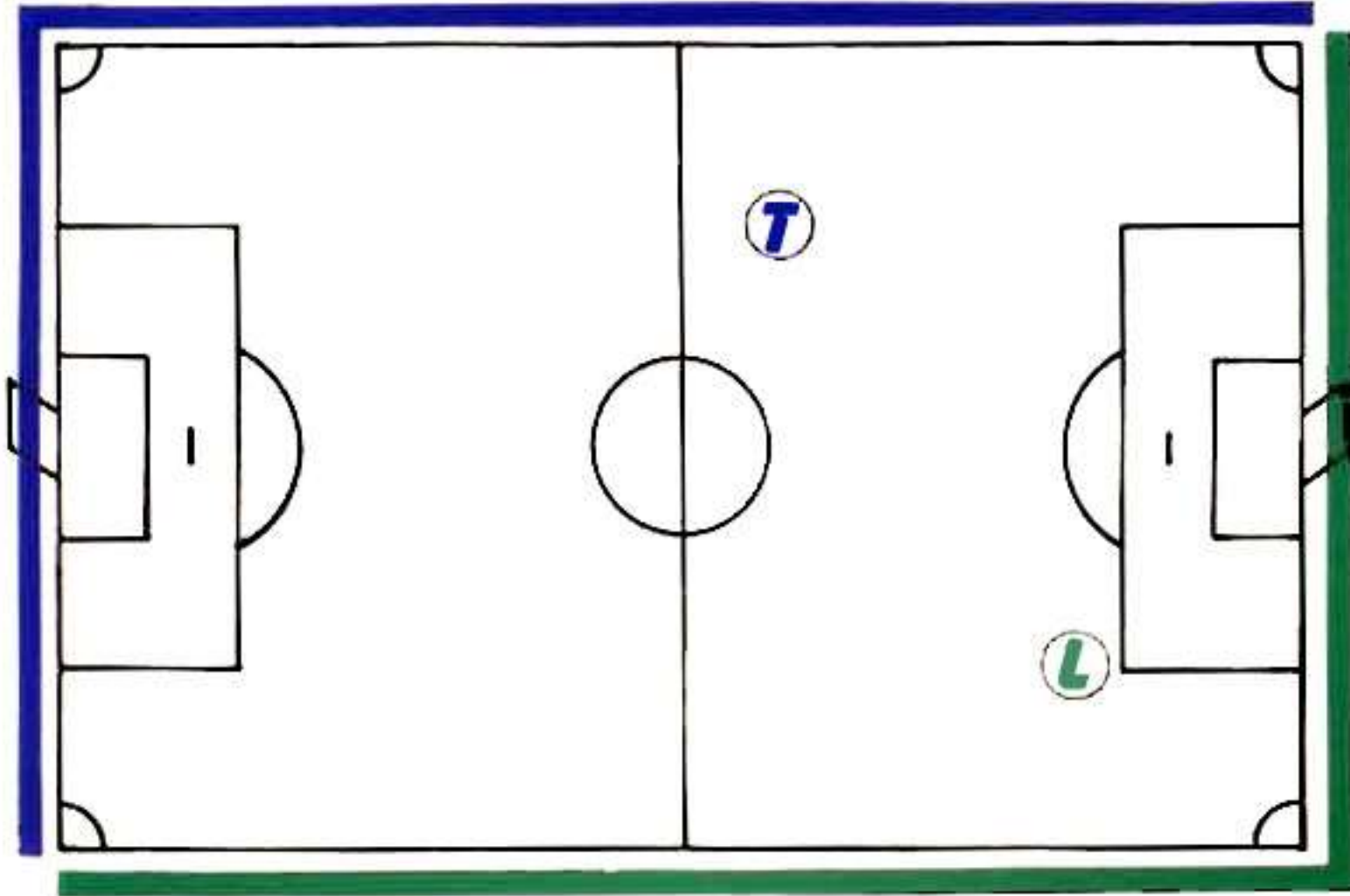
Subs – official responsible for restart whistles

## Making the Call - Eye Contact Essential



Referee who **SEES** the violation, whistles

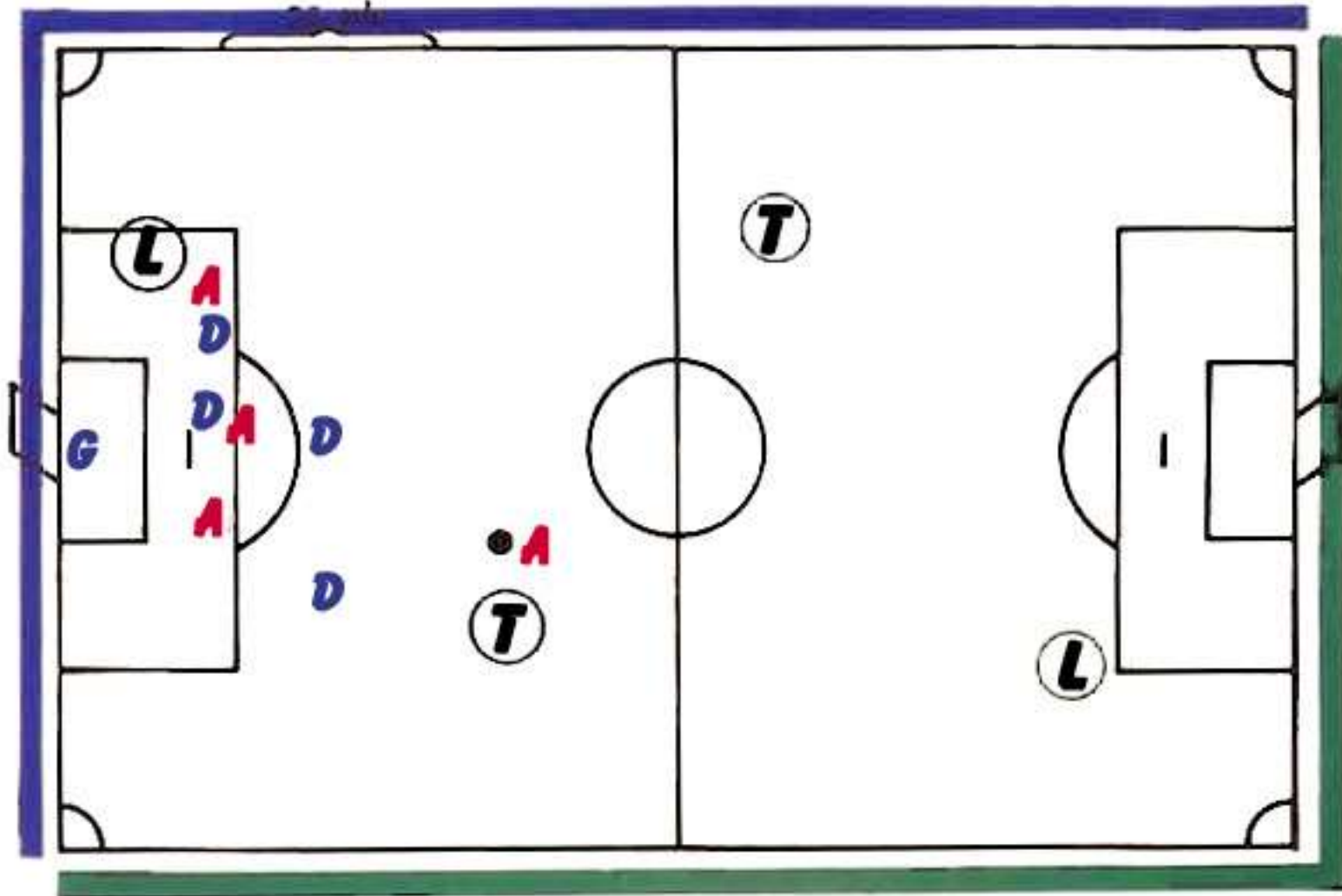
# Dual System of Control



Out of bounds responsibility

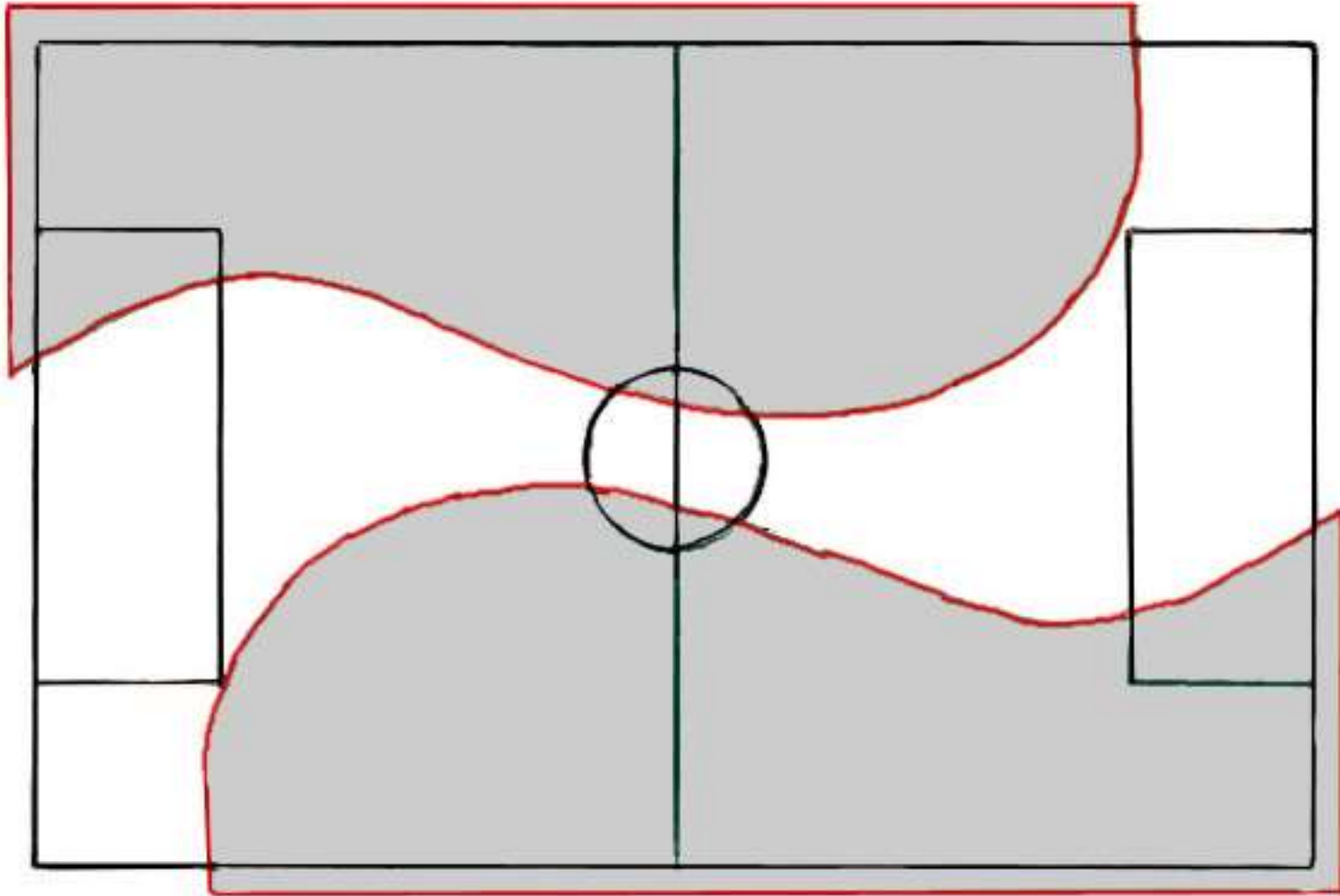


Keep play in between on the 30-40 yard rope



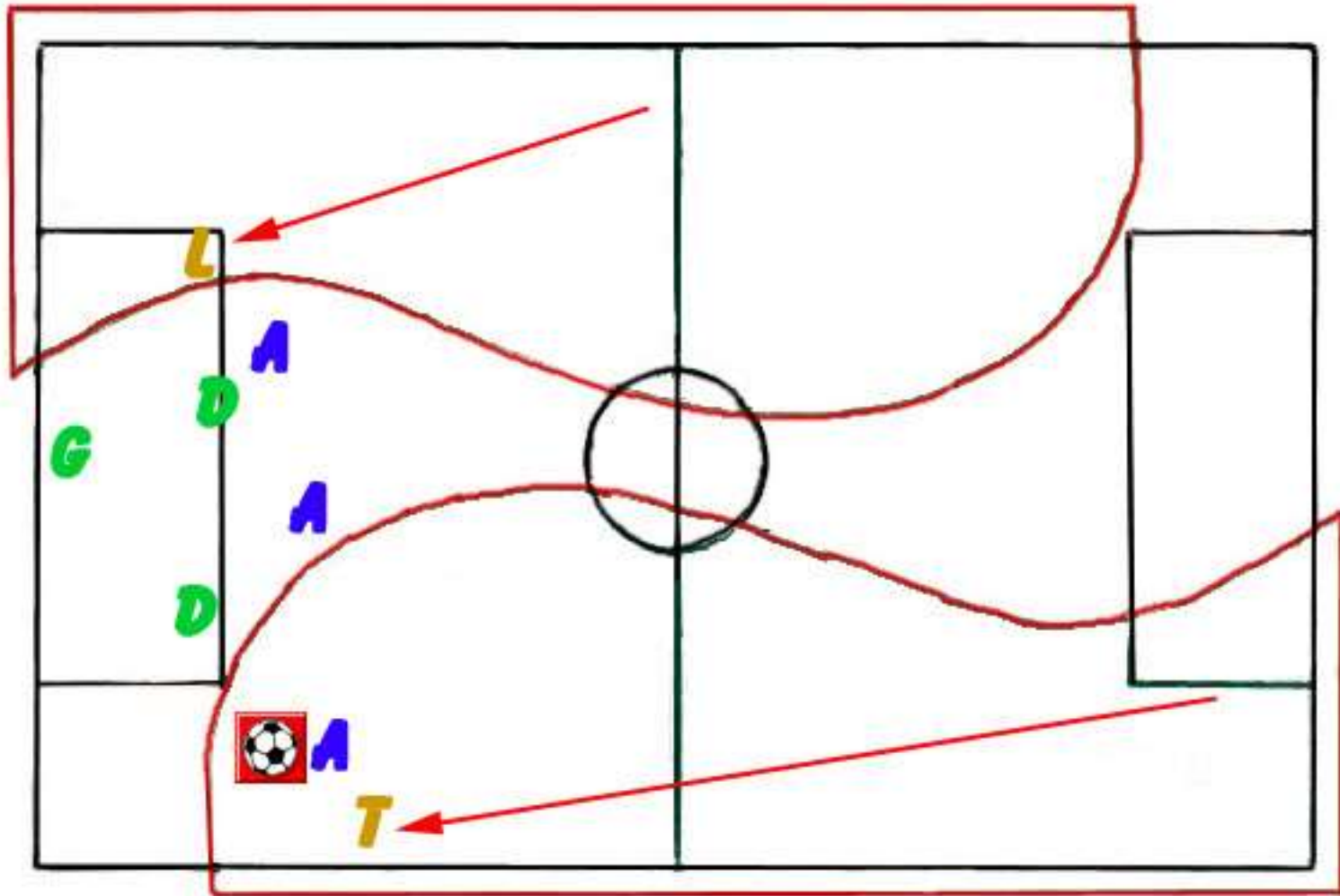
Adjust to flow – Lead Official keys on Lead Attacker

## No Touchline Hugging



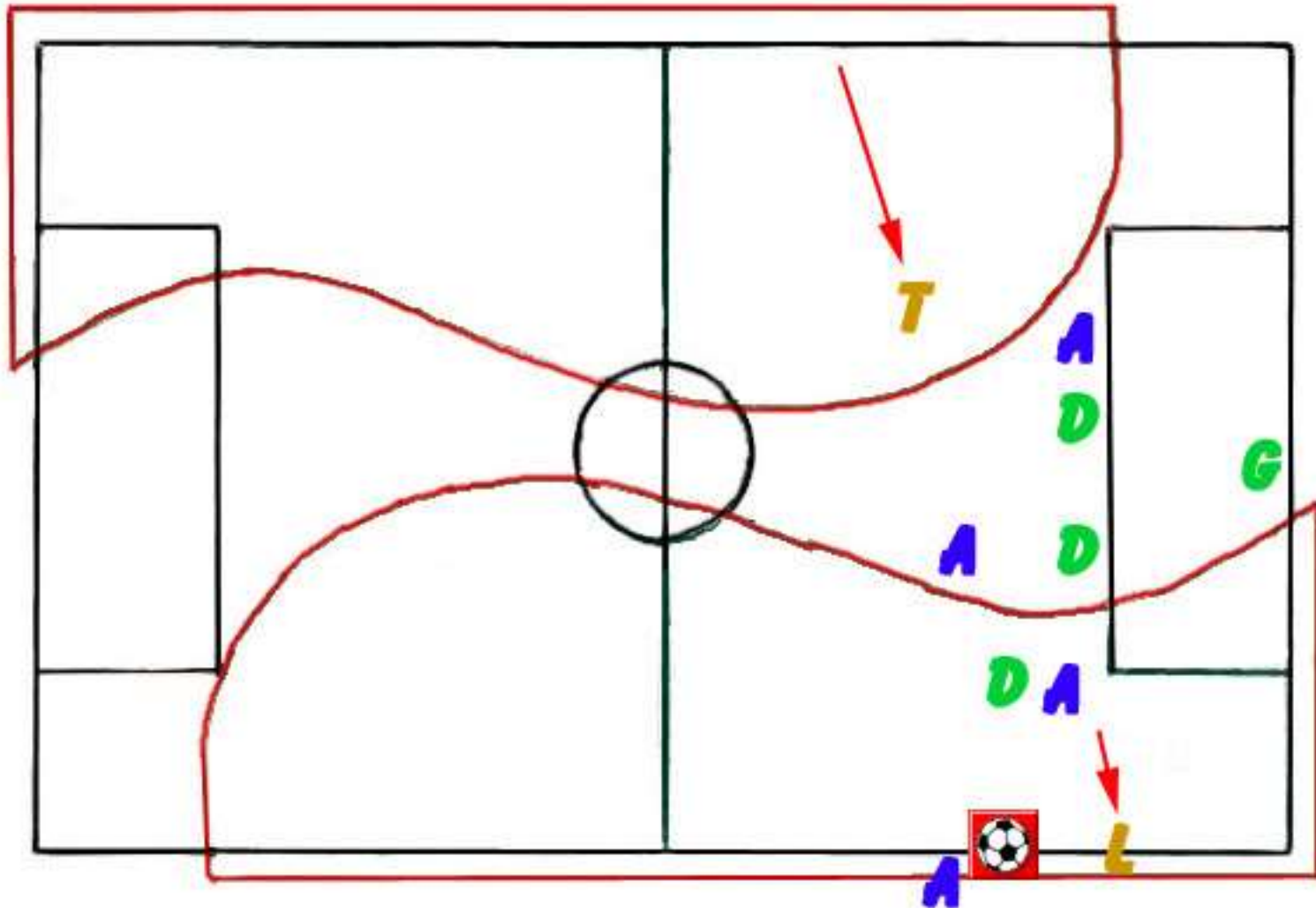
**Flexible Pattern – requires high work rate to stay close enough to play and still be able to cover the offside decision**

## Covering “coffin corner”



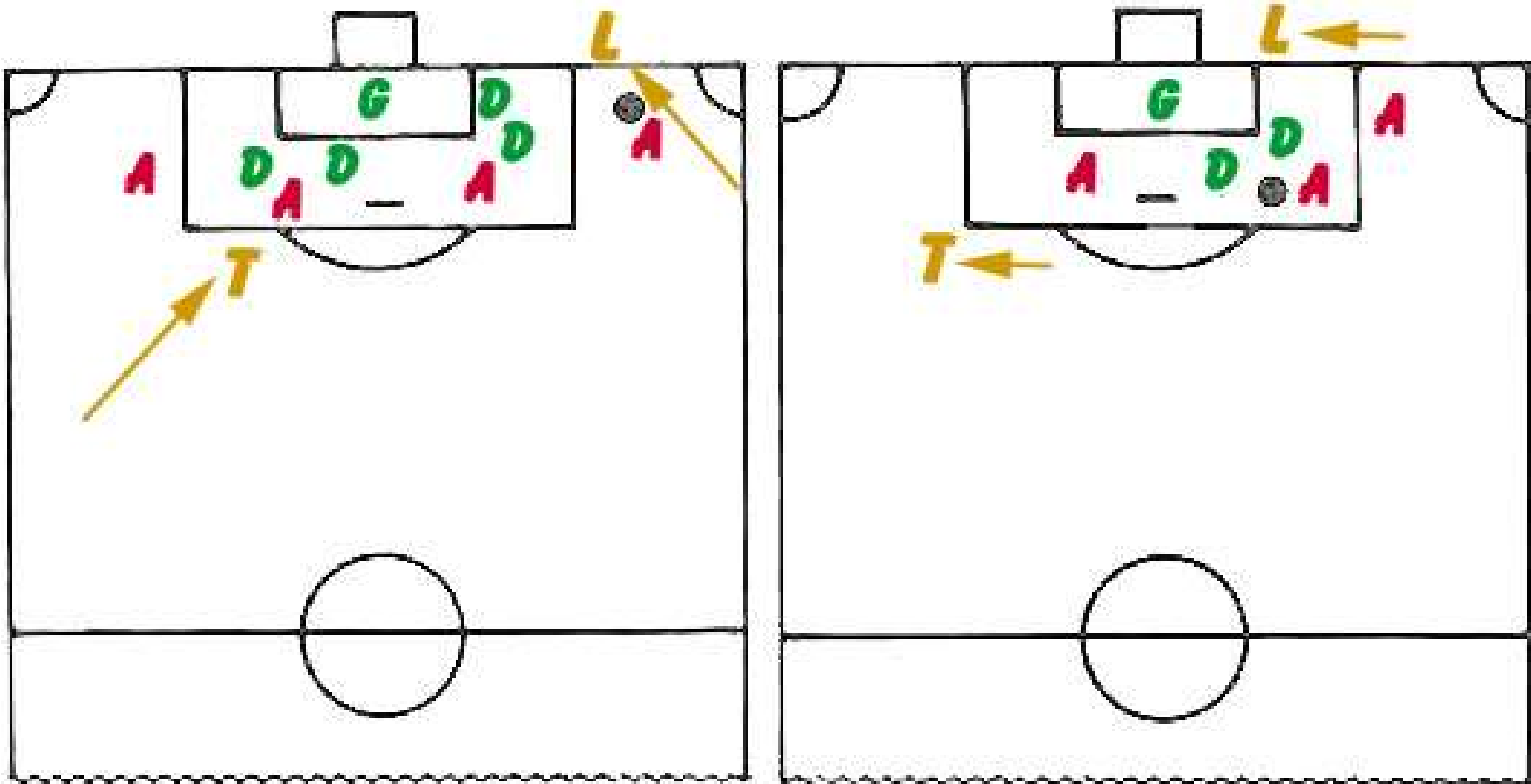
*Trail must press down with play. Lead is usually screened and must split his focus to determine offside.*

## Running off the field may be required



*Just like diagonal system? Lead referee should be closer to the goal than the thrower, in order to cover goal scored as well as offside.*

## Play near the goal



*Lead referee across the goal may be necessary, but may also compromise the offside decision.*

## Set Positions

Start of Play

During play

Free kick

Corner kick

Goalkeeper clearances

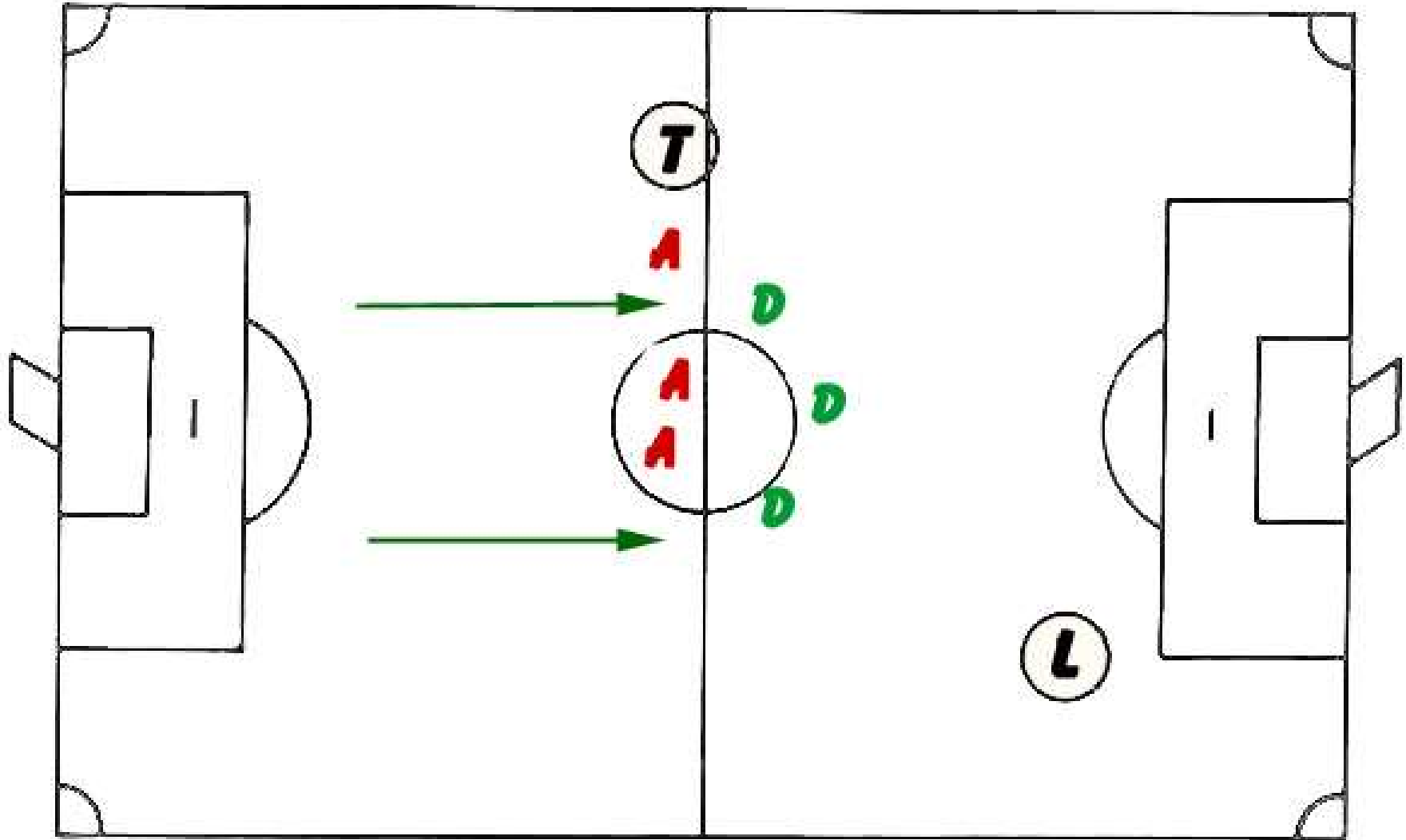
Goal kick

Penalty kick

Throw in

Drop ball

# Start of Play



## During Play



## Free Kick





# Free Kick in Attacking Half

## Trail referee:

Moves even with ball

## Covers:

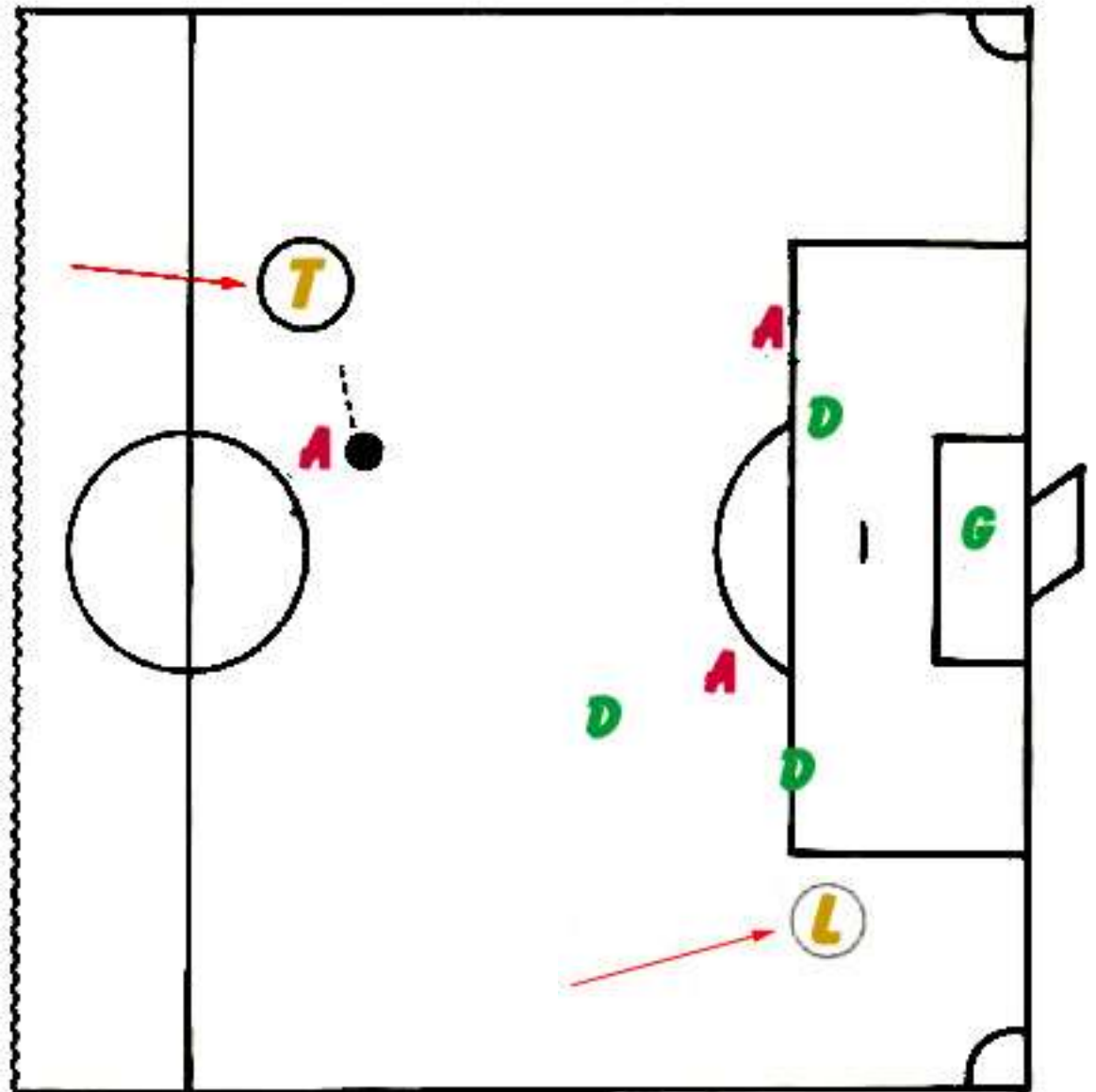
placement  
encroachment  
delays

*(Restart whistle when ceremonial. Ensure Lead is in position.)*

## Lead referee:

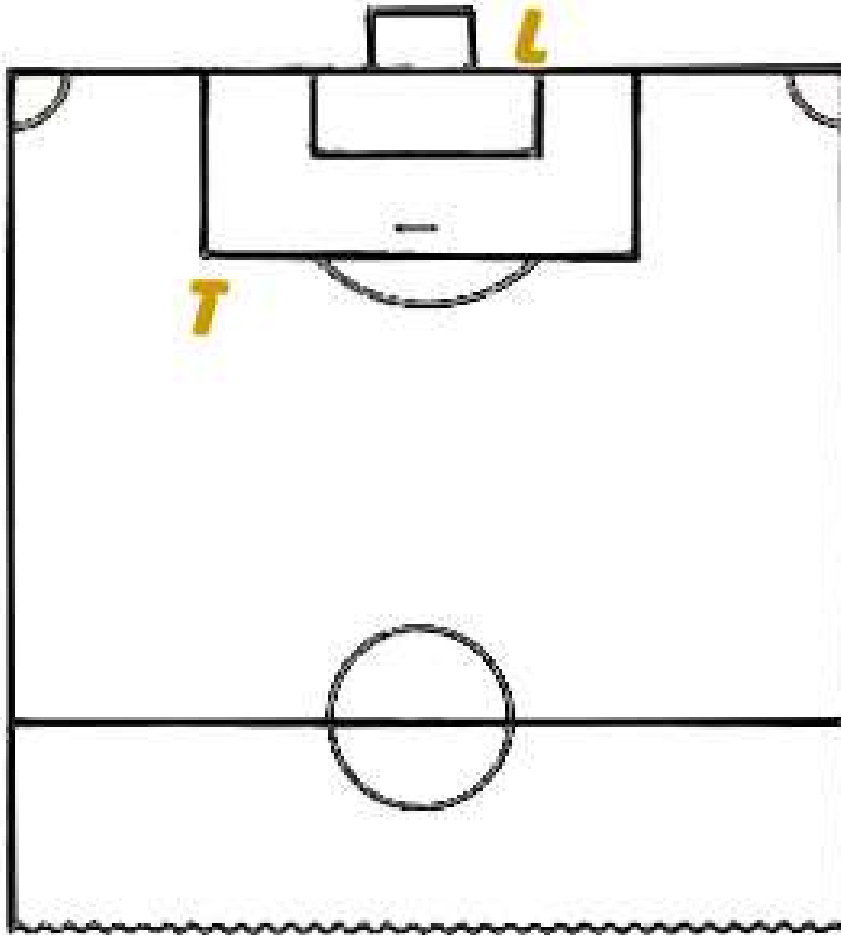
Moves ahead for  
Play/goal coverage

*(Eye contact or repeat DKF/IFK signal to show readiness.)*

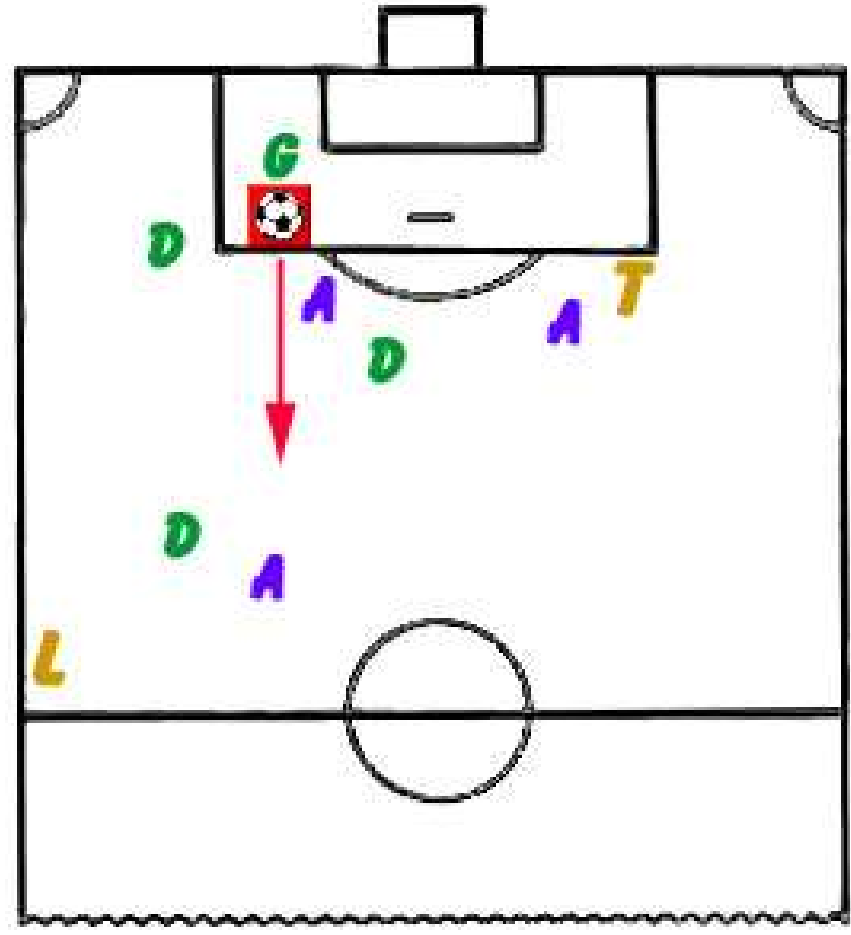


*A quick restart will be a positioning challenge*

## Corner Kick



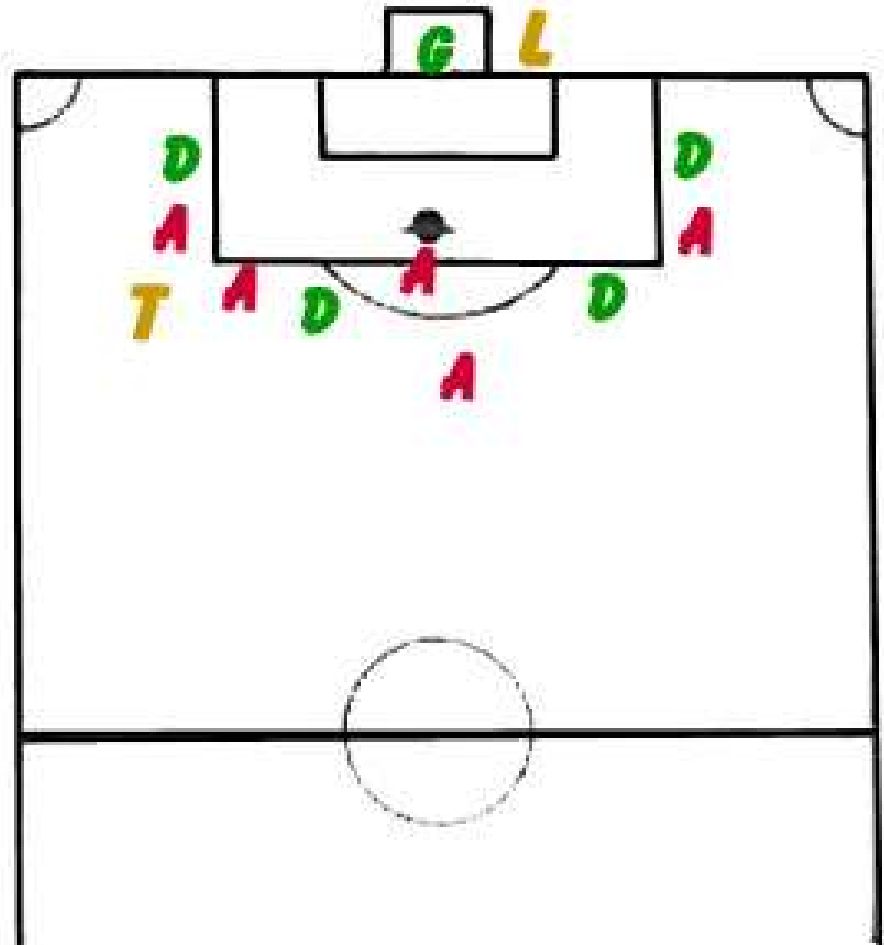
## Goalkeeper Clearance



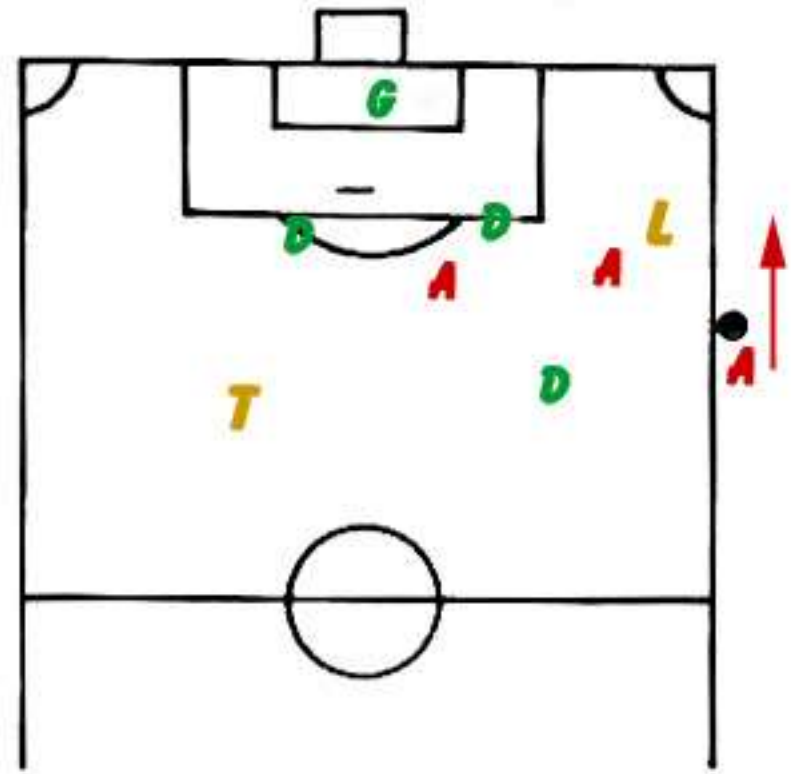
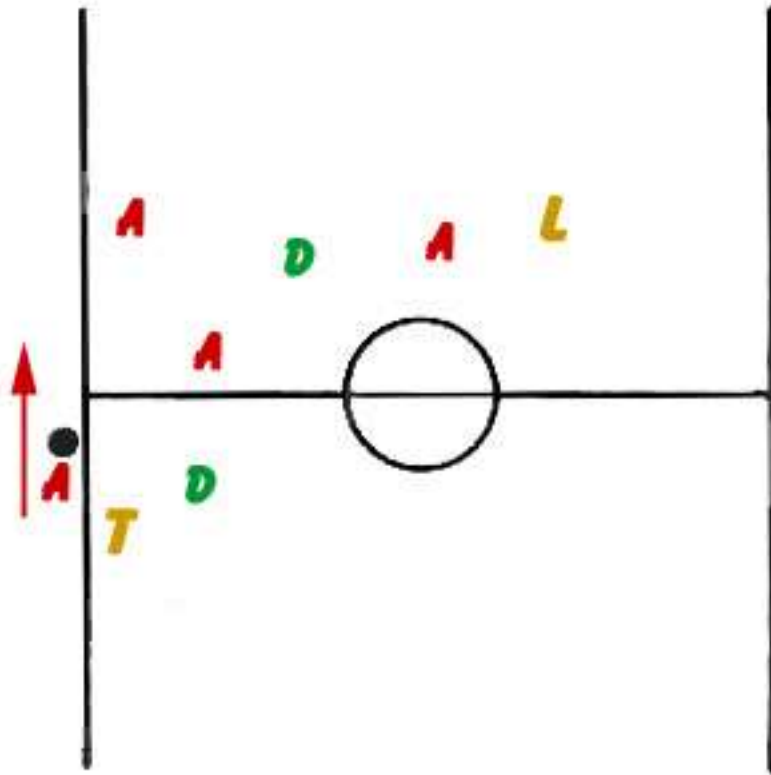
## Goal Kick

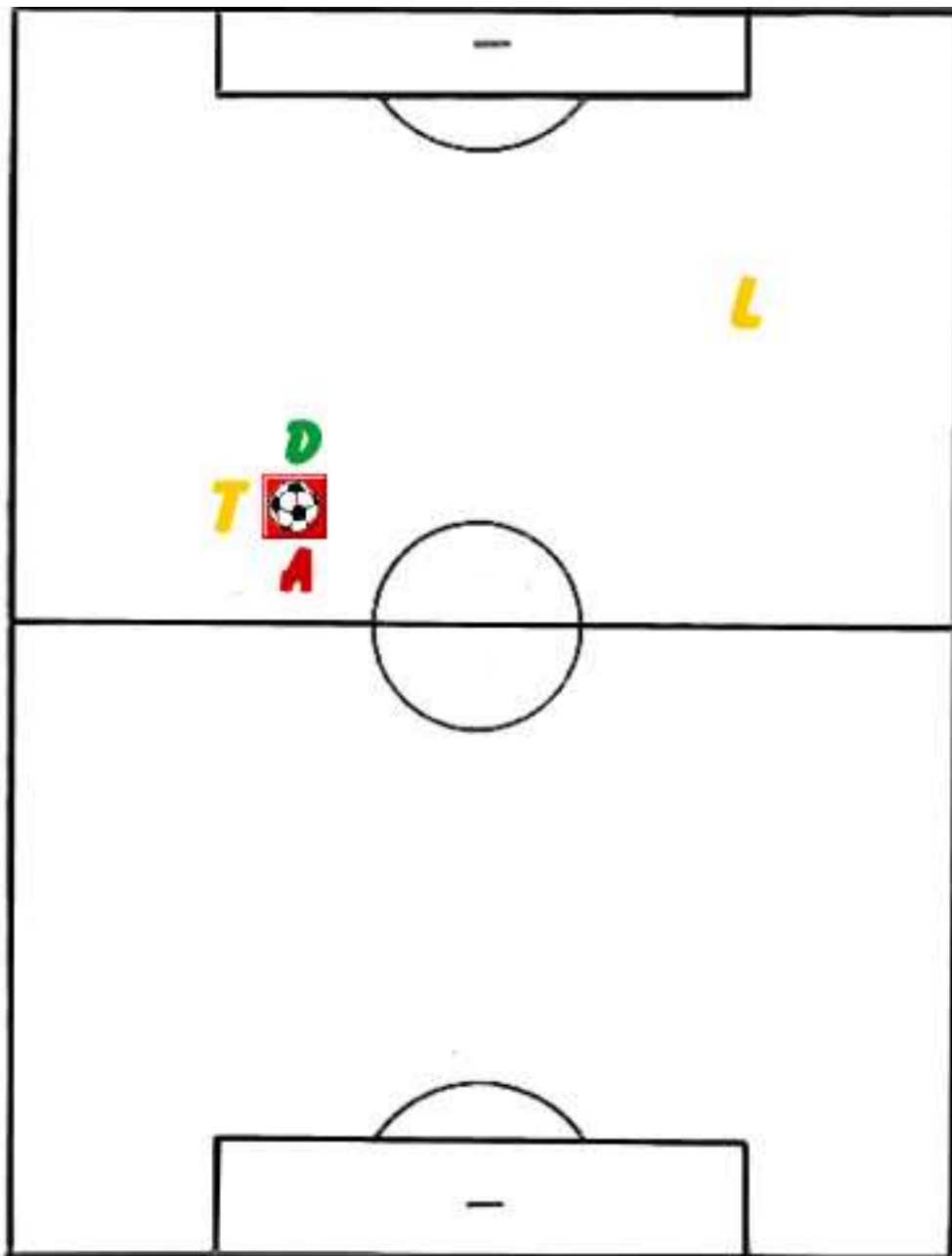


## Penalty kick



# Throw In





## Dropped Ball

Trail official controls drop ball

Lead official anticipates play

Direction of play could change quickly

Officials need to be ready to adjust quickly

*(NFHS Rules seem to indicate that there is a Restart whistle on Dropped balls??? Don't!)*

## Set Positions - Discussion? Questions?

Start of Play

During play

Free kick

Corner kick

Goalkeeper clearances

Goal kick

Penalty kick

Throw in

Drop ball



**Remember “Dual in  
Dual System”**

**is NOT spelled “duel”**

***As always, teamwork is the  
key to success.***



# NFHS Soccer

---

# Dual System Mechanics

Tarrant Chapter TASO Soccer

**Oct 22, 2009**

(Adapted from: High School Soccer Referees Association  
of Greater St. Louis **Compiled and Edited by Mike Stosz**)